

Sika AnchorFix® Range
High Performance, Fast Curing
Anchoring Adhesive
for Structural Applications



Sika solutions for all type of Anchoring Applications

Sika AnchorFix® Range



Sika AnchorFix®-2

High Performance, Fast Curing Anchoring Adhesive



for structural applications with medium to high loads

- Reduced anchor length possible due to very high load capacities
- ETA approved
- Being tested in accordance to ICC/ICBO standards
- Styrene-free
- Can be applied with standard sealant guns

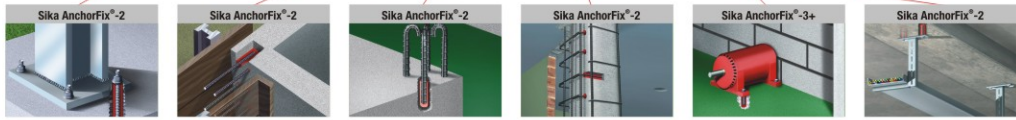
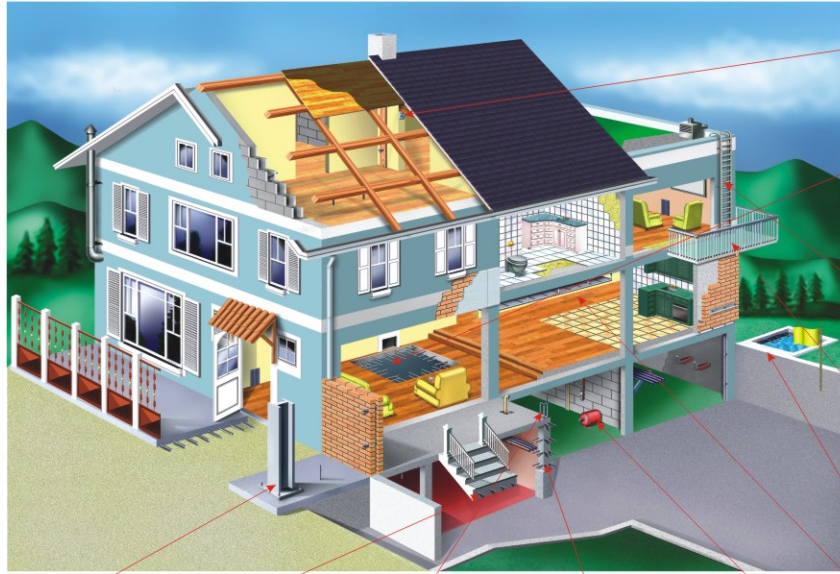


Sika AnchorFix®-3+

High-Performance, 2-Part Epoxy Anchoring Adhesive

for anchoring into damp and wooden substrates for very high loads

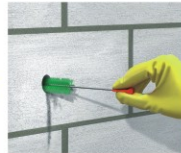
- Ideal for filling and anchoring in big holes
- Can be used on damp surfaces
- Can be used for wooden substrates
- Styrene-free
- 250 ml cartridge can be applied with standard sealant guns



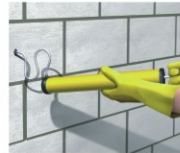
How to use...



Drill the hole with an electric drill. Diameter and depth of the hole must fit the element to be anchored.



The drill hole must be thoroughly cleaned with a round brush. The diameter of the brush must be larger than the diameter of the drill hole.



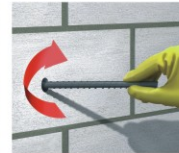
The drill hole must be cleaned after each cleaning step with a blowpump or by compressed air, starting from the bottom of the hole.
Important: use oil-free compressors!



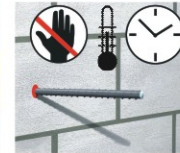
Pump approx. twice until both parts come out uniformly. Do not use this material Release the gun pressure and clean the cartridge opening with a cloth.



Inject the adhesive into the hole, starting from the bottom, while slowly drawing back the static mixer. In any case avoid entrapping air. For deep holes extension tubing can be used.



Insert the anchor with a rotary motion into the filled drill hole. Some adhesive must come out of the hole.
Important! The anchor must be placed within the open time.

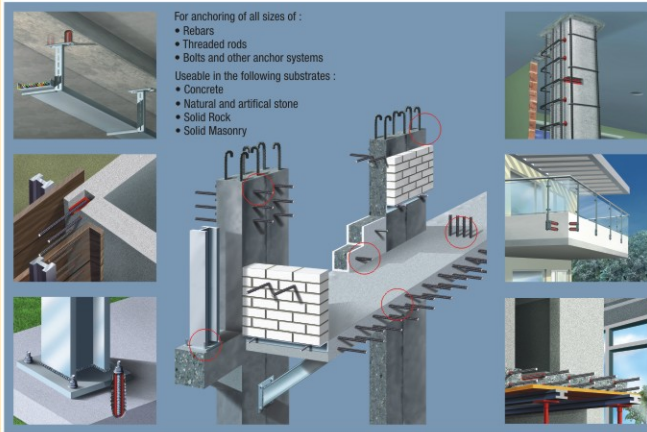


During the hardening time the anchor must not be moved or loaded. Wash tools immediately with Sika® Colma Cleaner. Wash hands and skin thoroughly with warm soap water.



Sika AchorFix® -2

Fast Curing Anchoring Adhesive for medium to high loads



For anchoring of all sizes of :

- Rebars
- Threaded rods
- Bolts and other anchor systems

Useable in the following substrates :

- Concrete
- Natural and artificial stone
- Solid Rock
- Solid Masonry

Features and Benefits

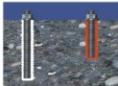
Ideal for anchoring of rebars and threaded rods.



Applicable with simple, inexpensive standard guns.

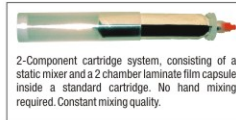
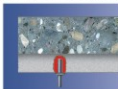


Reduced anchor length possible due to very high load capacities.



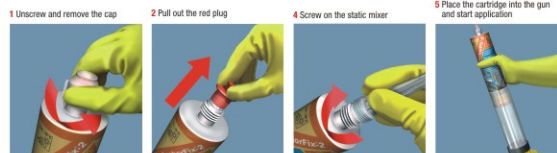
- No transportation restrictions
- Shelf life: 15 months
- Styrene-free, low odour
- Fast curing
- ETA approved

Can be used for overhead applications without temporary fixing of anchor.



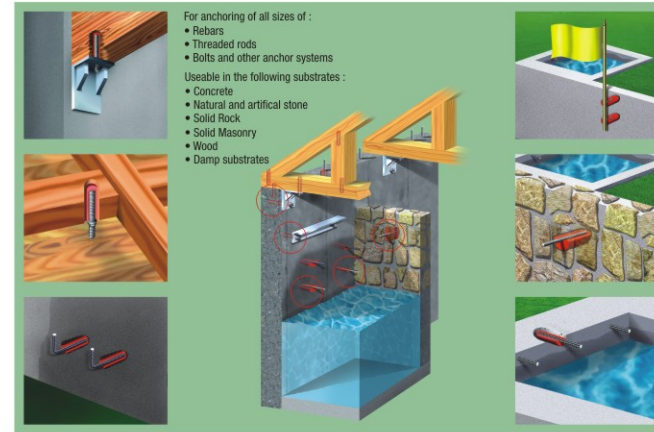
2-Component cartridge system, consisting of a static mixer and a 2 chamber laminate film capsule inside a standard cartridge. No hand mixing required. Constant mixing quality.

Handling



Sika AchorFix® -3+

Anchoring Adhesive for damp substrates and very high loads



For anchoring of all sizes of :

- Rebars
- Threaded rods
- Bolts and other anchor systems

Useable in the following substrates :

- Concrete
- Natural and artificial stone
- Solid Rock
- Solid Masonry
- Wood
- Damp substrates

Features and Benefits

Shrinkage-free hardening.



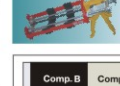
250 ml cartridge can be used with a standard gun



Ideal for filling and anchoring in big holes.



400 ml cartridge can be used with the VBM 200X gun



Can be used on damp surfaces. Can be used for wood anchoring.



- Very high load capacity
- Shelf life: 18 months
- Very good water resistance
- Solvent-free
- Excellent resistance to ageing
- Styrene-free
- Non-sag, also overhead

2-Component epoxy anchoring adhesive (1:1 mixing ratio) supplied in a 250 ml cartridge including 1 mixer. No hand mixing required, constant mixing quality. Also available in a 400 ml side by side cartridge.

Curing Time

Sika AchorFix® -2

| Temperature | Open Time T_{op} | Curing Time T_{cr} |
|---------------|--------------------|----------------------|
| +20°C - +35°C | 1 minute | 40 minutes |
| +10°C - +20°C | 4 minutes | 70 minutes |
| +5°C - +10°C | 8 minutes | 100 minutes |
| 0°C - +5°C | - | 180 minutes |
| -5°C - 0°C | - | 24 hours |

Sika AchorFix® -3+

| Temperature | Open Time T_{op} | Curing Time T_{cr} |
|---------------|--------------------|----------------------|
| > +40°C | 10 minutes | 7 hours |
| +20°C - +35°C | 15 minutes | 14 hours |
| +10°C - +20°C | 35 minutes | 30 hours |
| +5°C - +10°C | 75 minutes | 45 hours |
| 0°C - +5°C | - | 70 hours |

*Min. cartridge temperature = +5°C

*Min. cartridge temperature = +5°C



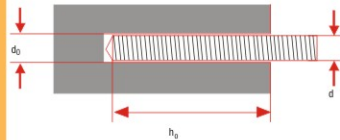
Consumption / Dosage

Filling quantity in ml

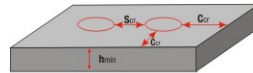
| Anchor diameter in mm | Drill hole in mm | | Drill hole depth in mm | | | | | | | | | | | | | | | | | | | | | | | | | | | | | | | |
|-----------------------|------------------|-----|------------------------|-----|-----|-----|-----|-----|-----|-----|-----|-----|-----|-----|-----|-----|--|--|--|--|--|--|--|--|--|--|--|--|--|--|--|--|--|--|
| | Min | Max | 100 | 120 | 140 | 160 | 180 | 200 | 220 | 240 | 260 | 280 | 300 | 400 | 500 | 600 | | | | | | | | | | | | | | | | | | |
| 8 | 10 | 18 | 3 | 4 | 4 | 5 | 6 | 6 | 7 | 7 | 8 | 8 | 9 | 12 | 15 | 17 | | | | | | | | | | | | | | | | | | |
| | 12 | 20 | 4 | 5 | 5 | 6 | 7 | 7 | 8 | 9 | 9 | 10 | 11 | 14 | 18 | 21 | | | | | | | | | | | | | | | | | | |
| 10 | 14 | 22 | 5 | 5 | 6 | 7 | 8 | 9 | 10 | 10 | 11 | 12 | 13 | 17 | 21 | 25 | | | | | | | | | | | | | | | | | | |
| | 18 | 24 | 11 | 13 | 15 | 17 | 19 | 21 | 23 | 25 | 27 | 29 | 31 | 41 | 51 | 61 | | | | | | | | | | | | | | | | | | |
| 12 | 14 | 24 | 30 | 36 | 42 | 48 | 54 | 60 | 66 | 72 | 78 | 84 | 90 | 120 | 150 | 180 | | | | | | | | | | | | | | | | | | |
| | 18 | 26 | 12 | 14 | 16 | 19 | 21 | 23 | 25 | 28 | 30 | 32 | 34 | 46 | 57 | 68 | | | | | | | | | | | | | | | | | | |
| 14 | 20 | 30 | 33 | 40 | 47 | 53 | 60 | 66 | 73 | 80 | 86 | 93 | 99 | 132 | 165 | 198 | | | | | | | | | | | | | | | | | | |
| | 24 | 30 | 18 | 22 | 25 | 29 | 32 | 36 | 39 | 43 | 46 | 50 | 54 | 71 | 89 | 107 | | | | | | | | | | | | | | | | | | |
| 16 | 20 | 30 | 40 | 48 | 56 | 63 | 71 | 79 | 87 | 95 | 103 | 111 | 118 | 158 | 197 | 236 | | | | | | | | | | | | | | | | | | |
| | 24 | 30 | 26 | 31 | 36 | 41 | 46 | 51 | 56 | 61 | 66 | 72 | 77 | 102 | 127 | 153 | | | | | | | | | | | | | | | | | | |
| 20 | 25 | 32 | 36 | 43 | 50 | 57 | 64 | 71 | 78 | 85 | 92 | 99 | 106 | 141 | 176 | 211 | | | | | | | | | | | | | | | | | | |
| | 30 | 38 | 33 | 40 | 47 | 53 | 60 | 66 | 73 | 80 | 86 | 93 | 99 | 132 | 165 | 198 | | | | | | | | | | | | | | | | | | |
| 24 | 30 | 40 | 46 | 55 | 64 | 73 | 82 | 91 | 100 | 109 | 118 | 127 | 136 | 181 | 227 | 272 | | | | | | | | | | | | | | | | | | |
| | 32 | 40 | | | | | | | | | | | | | | | | | | | | | | | | | | | | | | | | |

This calculation is based on actual volume. However additional 20% to 25% material (volume) should be considered as wastage / other factors.

Information and data given are based on our experience, research and testing, and are considered to be reliable and accurate. Sika being however not in a position of knowing all purposes and methods of use of this product shall not be liable for damages. **Important!** The load-bearing capacity of the chosen anchor must in any case be verified.



- d stud or bar nominal diameter (mm)
- d₀ drilled hole diameter (mm)
- h₀ hole depth (allthread) (mm)
- h_e effective bond length (rebar) (mm)
- C close edge distance (mm)
- S anchor spacing (mm)
- C_r required close edge distance to achieve N_w
- S_r required anchor spacing to achieve N_w
- t_{min} minimum concrete member thickness (mm)
- f_{cm} concrete compressive strength (N/mm²)



- N_w anchor characteristic load, tension (kN)
- V_w anchor characteristic load, shear (kN)
- N_{rw} anchor recommended load (kN)
- R_{f,c} close edge reduction factor, tension only
- R_{f,s} close edge reduction factor, shear only
- R_{f,c} close spacing reduction factor, tension only
- R_{f,s} close spacing reduction factor, shear only

System Components



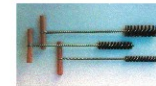
Additional Static Mixers for 400 ml cartridge

1 bag of 5 mixers, 1 bag of 10 mixers



Additional Static Mixers for 250 ml cartridge

1 bag of 5 mixers, 1 bag of 10 mixers



Hole Cleaning Brushes 1 brush / bag or set

Type Hole Diameter
Brush 13 6 12 mm
Brush 18 14 16 mm
Brush 28 18 25 mm



Extension Tubes

Length: 50 cm
1 bag of 5 tubes



Hole Cleaning Brushes for long Holes

Set with brush diameters 18/28/50 mm, length 60 cm



Flexible Extension Tubes

Length: 1m
1 bag of 2 tubes



Blow out Pump

1 pump / bag

Sika AnchorFix®-2 Guns



Sika PowerGun

for 300 ml cartridges
for 550 ml cartridges

Sika AnchorFix®-3+ Guns



Sika PowerGun for 250 ml



Cox VBM 200X Gun for 400 ml

Packaging :

Box with 12 x 300 ml cartridges
Box with 12 x 550 ml cartridges

Packaging :

Box with 12 x 250 ml cartridges
Box with 12 x 400 ml cartridges

Certificates / Approvals



Centre scientifique et Technique du Batiment (CSTB) European Technical Approval for Sika AnchorFix-2 stainless steel bonded anchor



Centre scientifique et Technique du Batiment (CSTB) European Technical Approval for Sika AnchorFix-2 galvanneal bonded anchor



Civil-Aid Technoconcrete Pvt. Ltd. (a part of Torsteel, Bangalore) NABL Accredited Laboratory as per ISO-17025. Sika AnchorFix-2 Pull-Out Test Report



Sika - global knowledge with a local presence



Our most current General Sales Conditions shall apply. Please consult the Product Data Sheet prior to any use and processing.

Sika Branch Offices : Ahmedabad, Bangalore, Chandigarh, Chennai, Cuttack, Hyderabad, Kolkata, Mumbai, Noida & Pune.



Corporate Office
Sika India Pvt. Ltd.
301/302, Interface Building No. 16
Off Link Road, Malad (W)
Mumbai - 400 064
Tel: +91 22 4038 4038
Fax: +91 22 4038 4039
E-mail - info@in.sika.com
Website : www.sika.in



An ISO 9001:2000 Company